



A division of Western Motorsports Inc.

223114 Range Rd 285
Rocky View (Calgary), Alberta
T1X 0J7 Canada

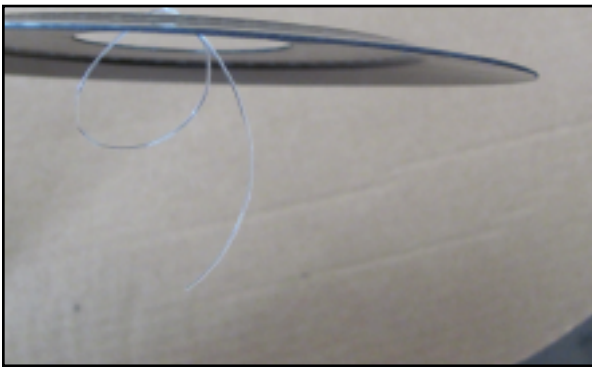
Phone: (403) 720-6205

Fax: (403) 243-8102

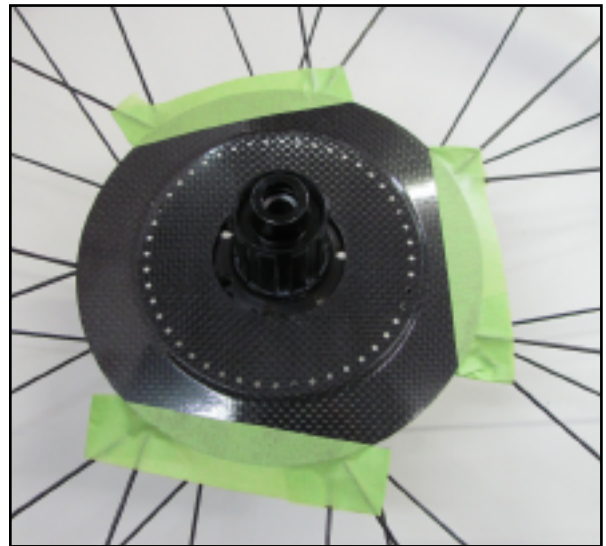
www.westernmountainsports.com

Carbon Fiber Spoke Protector - Installation Instructions

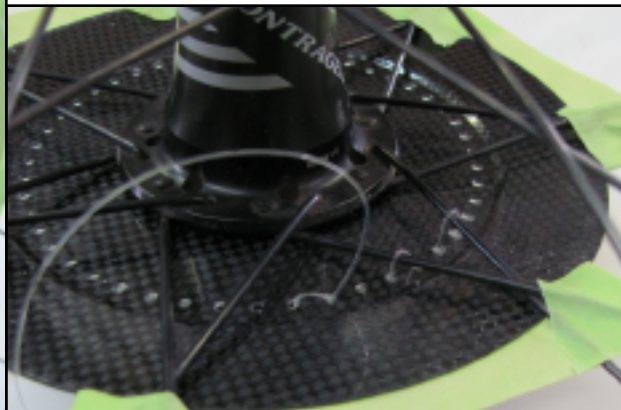
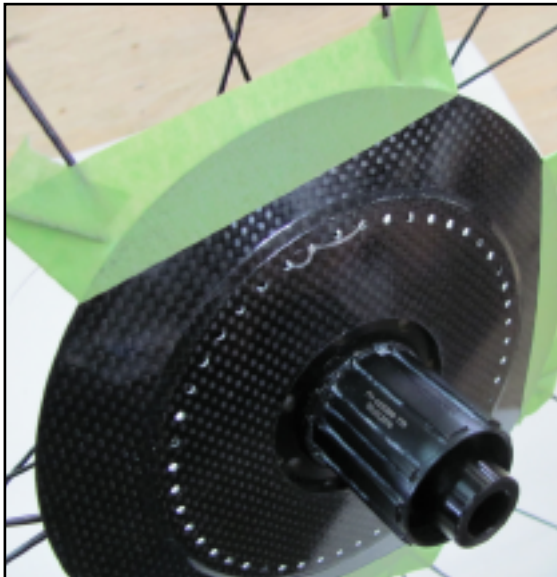
This carbon fiber spoke protector is compatible with any spoke pattern and installs easily and securely with our unique lacing system. Note you must remove your cassette from the wheel before starting the install.



Step 1 - Loop the lacing line through two holes in the disc as shown. Leave a long tail on the wheel side to tie later.



Step 2 - Center the disc on your hub and tape to the spokes so it cannot move around when lacing.



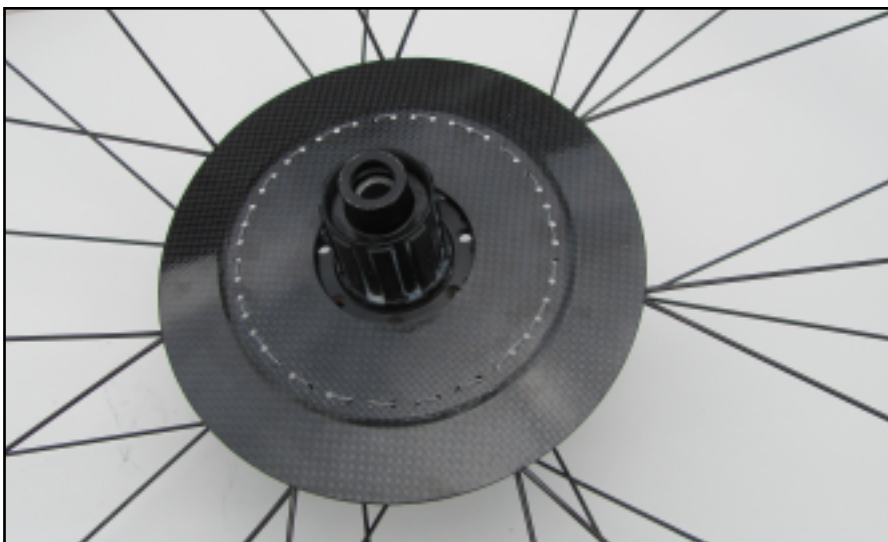
Step 3 - Start lacing with the long end of line. Go through a hole in the disc that is next to a spoke. Go around the spoke and back through the next hole so there is a tight loop around the spoke as shown.



Step 3 - Continue lacing around the disc. Depending on your spoke pattern you may skip a hole in order to go through the disc next to a spoke. It is important that you come through the disc next to a spoke, around the spoke and then back through the next hole in the disc. Pull the line snug after going through each hole.



Step 4 - Once you have laced around the disc, finish with the same loop you started. You should have two ends side by side as shown. Tie the ends together with a simple overhand knot, pull tight and add a second knot on top.



The finished product laced up to a wheel and ready to keep your chain from jamming between the spokes and cassette.