

File View Configuration

- New ← Click this to start a new set of Data Logs. Make sure you save this in a new folder.
- Open ← Opens an existing data set.
- Save ← Click this to save any changes made to the notes or descriptions.
- Save As ... ← Click this to save the notes to another file. Save this as a new name in the same folder. This will allow you to save different versions of the notes while sharing the same data set.

Start Logging

Start and Stop

RPM	AFR
250	0
500	0
750	0
1000	0
1250	16.855709728
1500	73.169670329
1750	58.837719298
2000	44.587818181
2250	20.405094339
2500	15.685576923
2750	13.751639344
3000	13.338571428
3250	12.657108433
3500	27.945614035

Date	Time	Length	Description	Display	Color
10/04/04	04:02:19 PM	0:0:22:582	Used Falling Edge	<input type="checkbox"/>	Red
10/04/04	04:13:49 PM	0:0:10:576	Used Rising Edge	<input checked="" type="checkbox"/>	Red

Saved C:\Documents and Settings\yremika\My Documents\testrpm2\4oct04.txt

File View Configuration

Logging Notes ConfigSheet Help About

Click here to start and stop the logging.

Start Logging

Start and Stop

These will blink when the logging is running.

Click here to print the current view on the graph.

Click here to save the current view of the graph to a standard picture format.

Click here to zoom in by drawing a window in the graph. Left click and drag (hold button down) to draw a window.

Click here to turn the cursor on. A vertical bar will appear in the middle of the graph. Dragging the bar left or right will show the values at that point in time. The values are displayed in the legend on the right side of the graph.

RPM	AFR
1500	73.169670329

Date	Time	Length	Description	Display	Color
10/04/04	04:02:19 PM	0:0:22:582	Used Falling Edge	<input type="checkbox"/>	Red
10/04/04	04:13:49 PM	0:0:10:576	Used Rising Edge	<input checked="" type="checkbox"/>	Red

Saved C:\Documents and Settings\yremika\My Documents\testrpm2\4oct04.txt

EAC O2 Data Logger --[Western Motorsports]--

File View Configuration

Log Filter RPM Zoom Extents Plot with RPM

Start Logging

Start and Stop

RPM	AFR
250	0
500	0
750	0
1000	0
1250	16.855709728
1500	73.169670329
1750	58.837719298
2000	44.587818181
2250	20.405094339
2500	15.685576923
2750	13.751639344
3000	13.338571428
3250	12.657108433
3500	27.945614035

This will filter the RPM when graphing to make it easier to read. This doesn't affect the data, it only filters when selecting a run to graph.

This will zoom out the graph to display every point on the screen.

If this is checked then the RPM will be graphed along with the AFR.

How to Show the Average AFR.
 1. zoom in on a portion of the graph you want to see the averages for.
 2. Next click on one of the channels in the legend on the top right of the graph.

Date	Time	Description	Display	Color
10/04/04	04:02:13		<input type="checkbox"/>	Red
10/04/04	04:13:40		<input checked="" type="checkbox"/>	Red

Saved C:\Documents and Settings\yremeka\My Documents\testrpm2\4oct04.txt

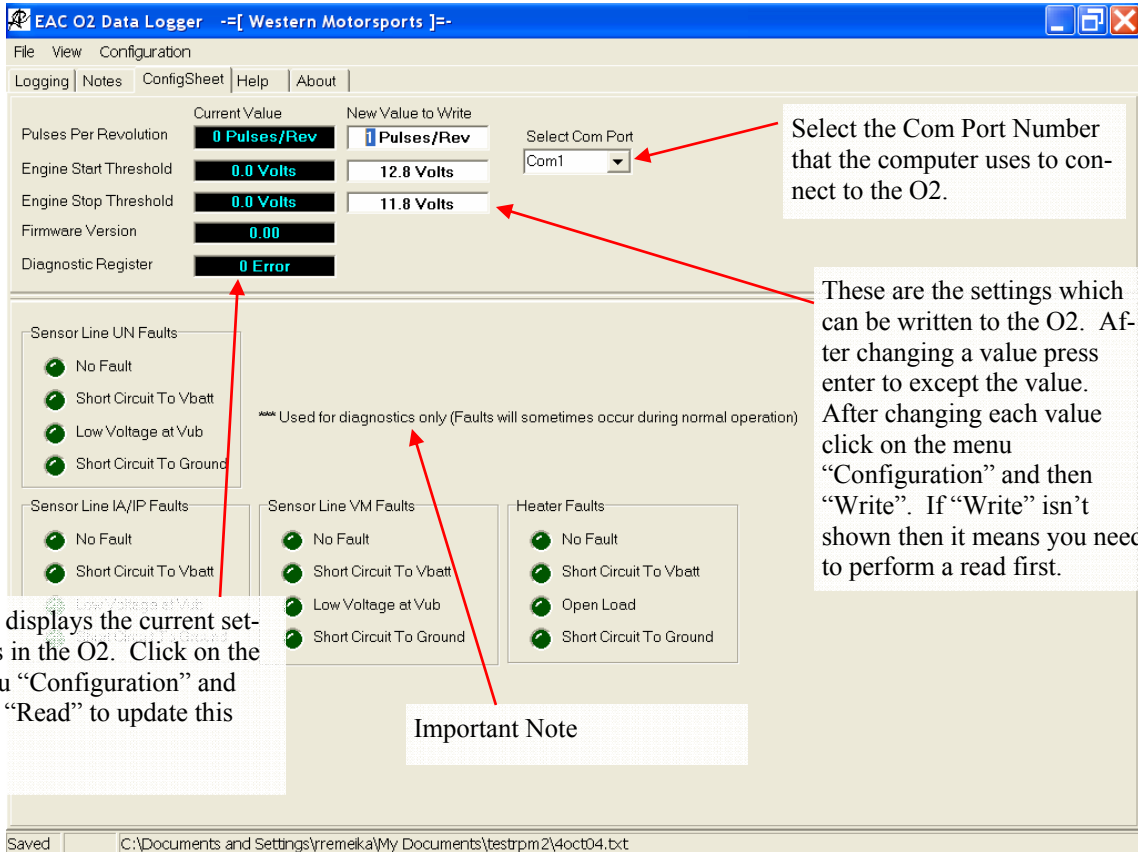
EAC O2 Data Logger --[Western Motorsports]--

File View Configuration

Logging Notes ConfigSheet Help About

Write any notes here to be saved.

Saved C:\Documents and Settings\yremeka\My Documents\testrpm2\4oct04.txt

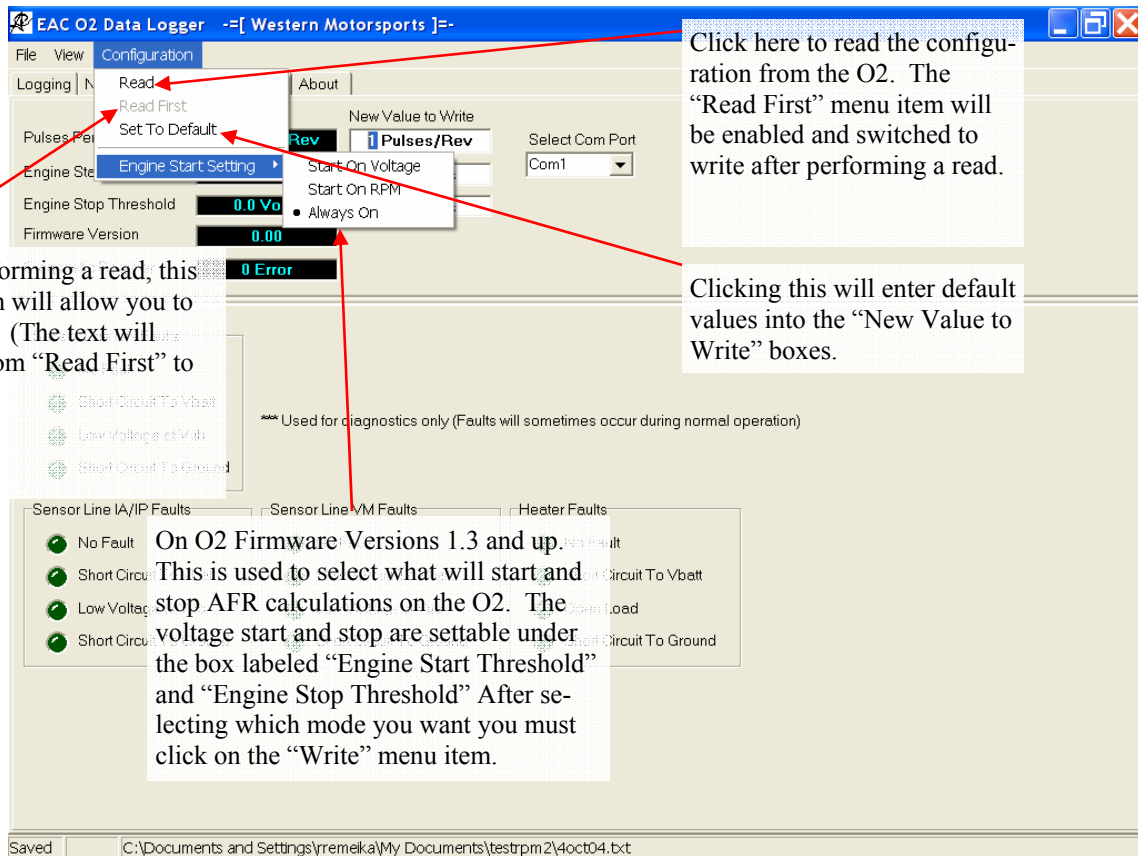


Select the Com Port Number that the computer uses to connect to the O2.

These are the settings which can be written to the O2. After changing a value press enter to except the value. After changing each value click on the menu "Configuration" and then "Write". If "Write" isn't shown then it means you need to perform a read first.

This displays the current settings in the O2. Click on the menu "Configuration" and then "Read" to update this list.

Important Note

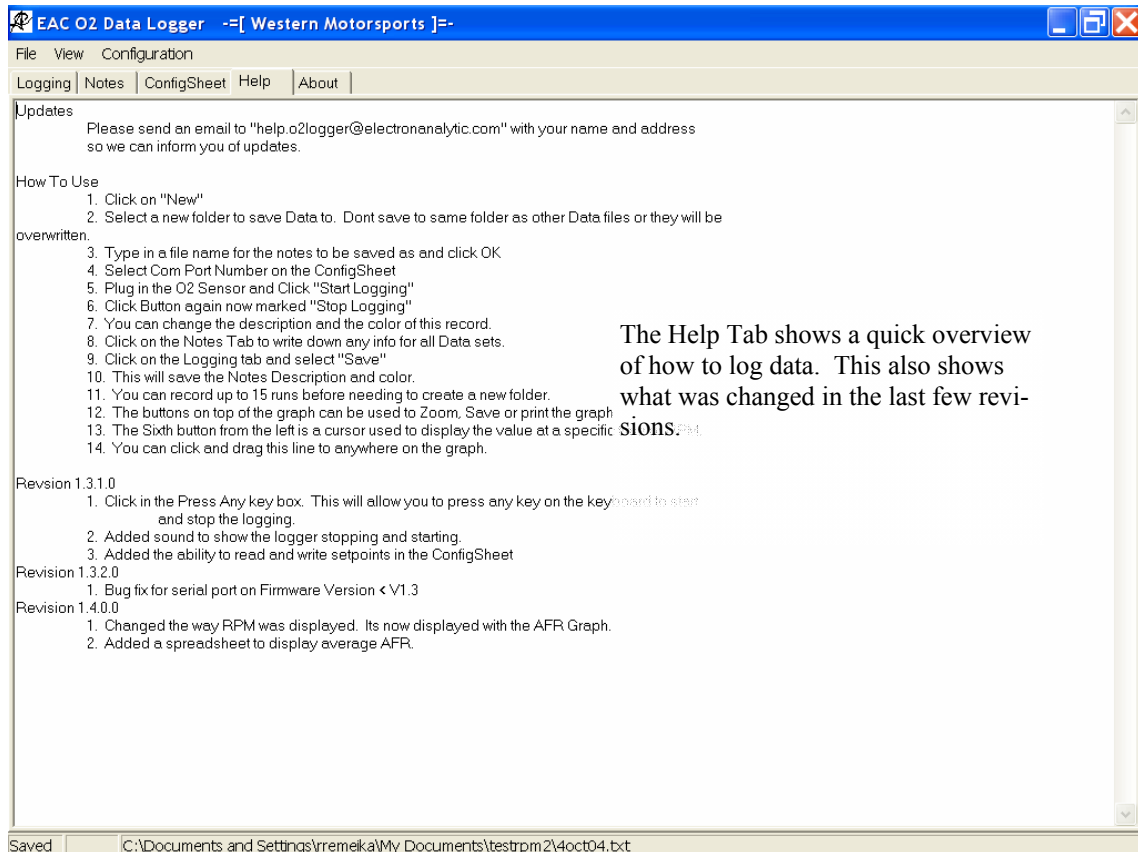


Click here to read the configuration from the O2. The "Read First" menu item will be enabled and switched to write after performing a read.

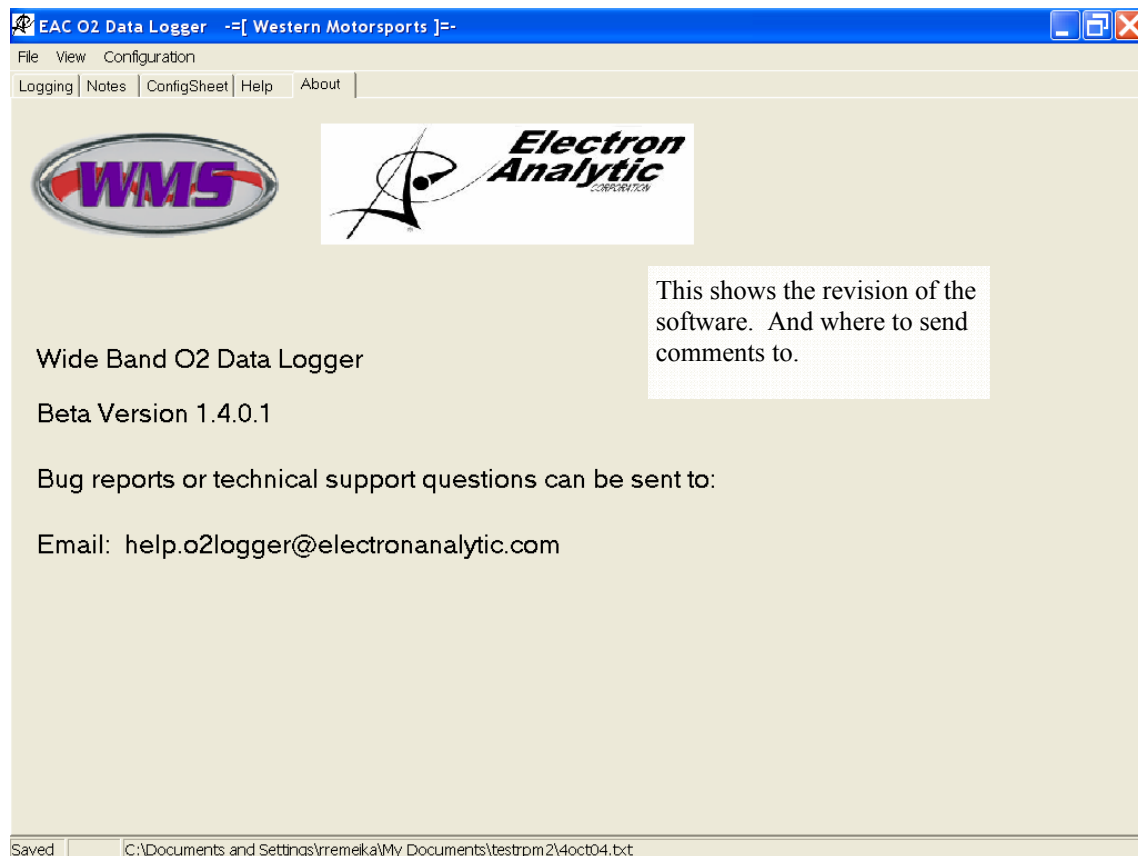
After performing a read, this menu item will allow you to do writes. (The text will change from "Read First" to "Write")

Clicking this will enter default values into the "New Value to Write" boxes.

On O2 Firmware Versions 1.3 and up, this is used to select what will start and stop AFR calculations on the O2. The voltage start and stop are settable under the box labeled "Engine Start Threshold" and "Engine Stop Threshold" After selecting which mode you want you must click on the "Write" menu item.



The Help Tab shows a quick overview of how to log data. This also shows what was changed in the last few revisions.



This shows the revision of the software. And where to send comments to.